



# Petit Scholars Bloomingdale 52 Quincy Pl, NW

Request for Special Exception

BZA #20488

# Petit Scholars Programs

---

4 Locations in Ward 5: Brookland and Woodridge Communities

---

The four locations are less than a mile from one another

---

Traditionally families choose their location based upon the distance from their home.

---

Most choose their location because of walking distance of their home

---

A large percentage of our families walk to their campus

Proposed  
Location:  
52 Quincy Pl  
NW



Entrance on Florida Avenue

2400 square feet of ground level commercial space.

Has the Capacity for

- 4 Classrooms
- 32 infants and toddlers ages 6 weeks – 4 years
- Open 7 am until 6pm
- Pandemic hours currently 8am-5pm

BZA #20488  
(September  
22, 2021)

---

**Request:**

Construct child care on the ground level of an existing 3 story mixed use building

**Relief:**

Special exemption from minimum parking requirement of Subtitle C § 701.5

# Community Support for Exception via Signature Collection

- **Spreadsheet Collection**
  - 25 signatures received from families primarily in the
    - 22 from Bloomingdale and Eckington communities
    - 1 from Le Droit Park
    - 3 within 200 ft Radius
  - Over 100 signatures were collected from the community and primarily included families in Bloomingdale, Eckington, and LeDroit Park

## Canvassing

### In Person Petition/ Signature Collection

- The residents of 52 Quincy would be most impacted by the presence of a childcare center on the lower level
- 52 Quincy has 20 units
- Received signatures of support from 11/20 tenants
- 20/21 signatures of support received from within the 200 ft radius
  - Primarily residents residing on Quincy Place and Florida Avenue NW

# Requirement and Proposal to Meet Requirement

- **1 parking space is required for STAFF at 52 Quincy.**
  - There is no commercial parking within the required 600 ft radius.
- Petit Scholars has secured an agreement for 1 parking space at 77 P Street NE. The location is a 3 minute walk from 52 Quincy PI NW.
- The plan is to maintain the contract for the entire duration of the lease at 52 Quincy PI NW. (Currently a 10 year lease)
- With the special exception, the request is to provide staff parking but it is further than the allotted distance based on regulations.



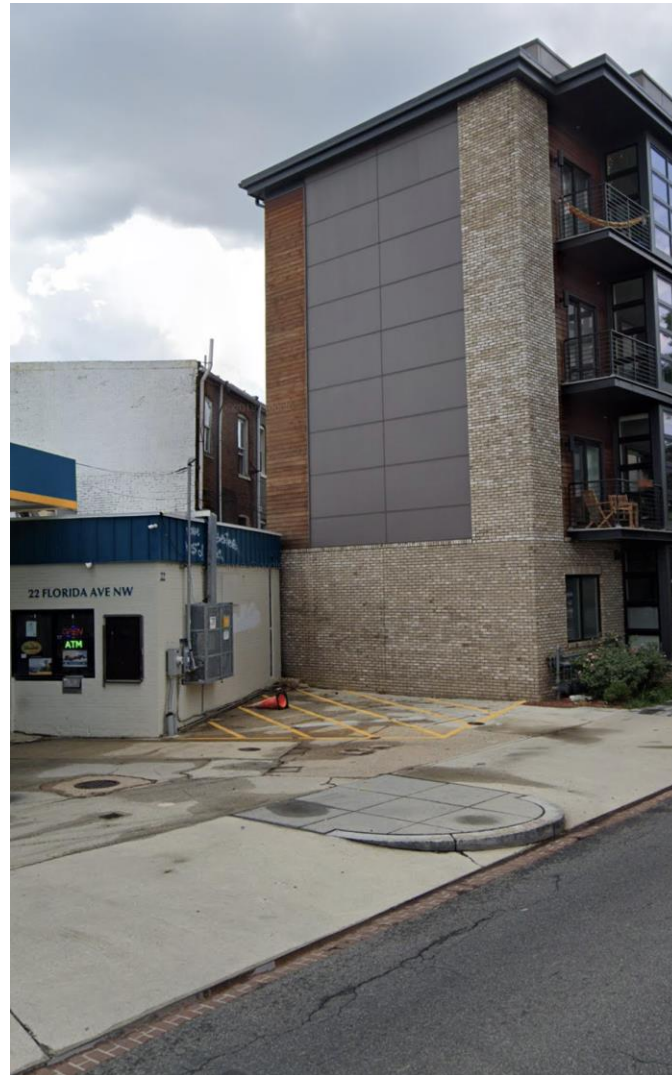
## Transportation Survey Results from Waitlisted Families

A survey was conducted with families on the waitlist for Petit Scholars Bloomingdale

- 39 Families responded to the survey
- 32/29 Families reside within 1 mile of 52 Quincy Place NW
- 29/39 plan to walk to the childcare center
- 7/39 plan to drive (private vehicles)
- 2/39 plan to bike
- 1/39 plan a combination of walking/driving



Proposal to  
Support  
Families  
Dropping off  
and Picking up



An agreement was made with the management at Exxon for short term family parking in the am/pm to drop off and pick up.

Families can cross at the crosswalk.